

User Manual

LARA v1.0

01.06.2006

1. Minimal System requirements	2
2. Installation	2
2.1. Program and sound library:	2
2.2. Demo lecture.....	3
3. Play the demo	4
3.1. Open the lecture	4
3.2. Play the lecture	5
3.3. Search for information.....	6
3.3.1. Use the Stylus for Full Screen and Normal Screen Mode	6
3.3.2. Use the Slider in the Normal Screen Mode	8
3.3.3. Table of contents (TOC).....	9
3.3.4. Thumbnails	10
3.3.5. Use forward/backward buttons	11
4. Options dialog.....	12
5. Close the program.....	13
6. Bugs list	14

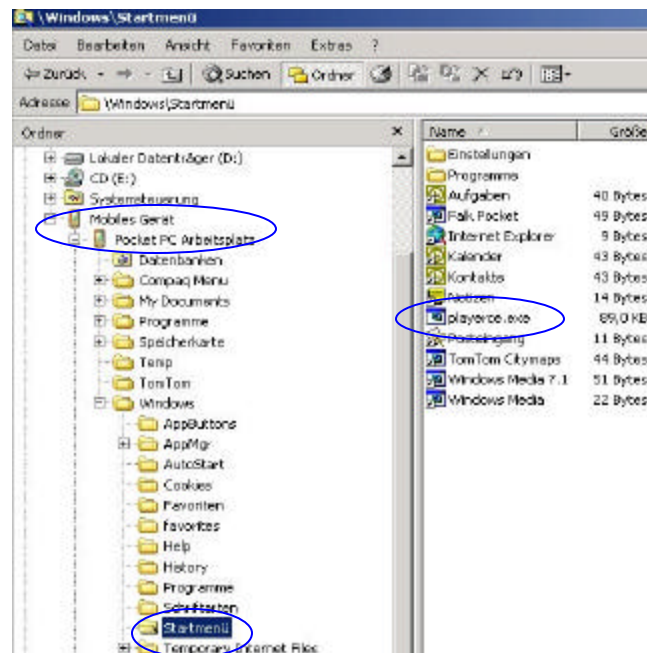
1. Minimal System requirements

- iPaq 3660 with Pocket PC 2000, Intel Strong ARM processor.
- 10 MB (RAM or Speicherkarte- Flash card) for the demo lecture.
- 10 MB RAM for running program.
- Fmod library v3.71ce installed (www.fmod.org).

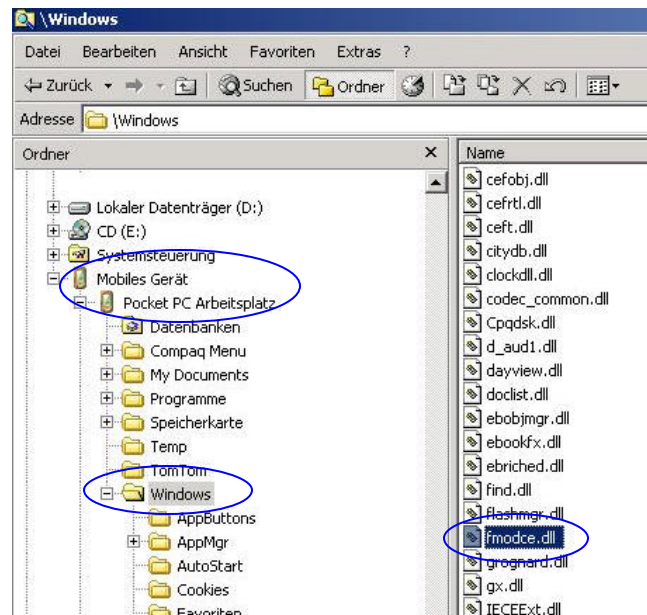
2. Installation

2.1. Program and sound library:

- Copy Lara-bin.exe to \Windows\Start menü (Pocket PC - German version) or to \Windows\Start menu (Pocket PC - English version) in the PDA.

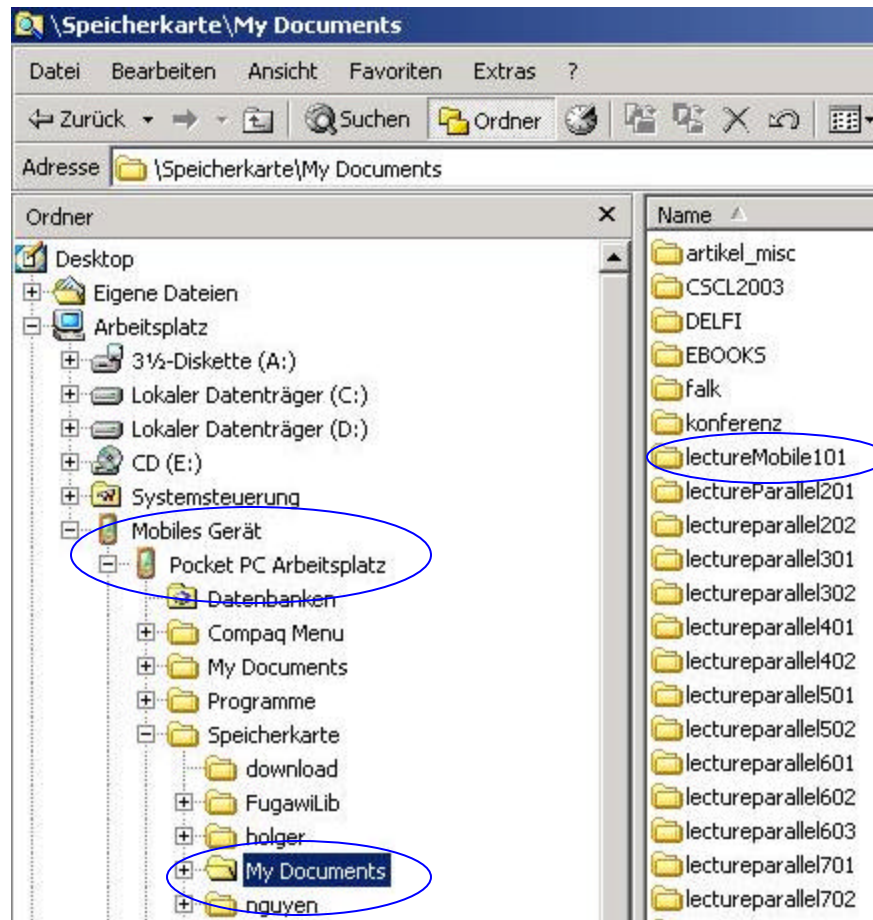


- Copy fmod.dll to \Windows\ directory in the PDA



2.2. Demo lecture

- Copy the whole directory: \lectureMobile101 on the CD to a directory on the PDA.
For example: \My Documents\DemoVortrag or \SpeicherKarte\lectureMobile101



Be sure that after copying the demo data, there is still at least 10MB RAM free.

3. Play the demo

3.1. Open the lecture

The left picture show the starting screen of the program. To open a lecture, select from the menu (Main-Open) or click on the “open” icon on the toolbar on the bottom of the screen or press the button (see below). A new window is opened (right picture), only program’s configuration files (*.cep) can be selected as shown in the “Type” field. Click on a list item to play the desired lecture. It could take few seconds to open the lecture; a busy cursor will be displayed.



Click on the icon, press the button, or select Open from menu (Main-Open)



A dialog is opened. Click to select a lecture.

3.2. Play the lecture

Normal Screen Mode

After a lecture is opened you are in the **normal screen mode**. You can use this mode for the replay or you can replay the presentation in the **full screen mode**. To switch to the full screen mode, click the full screen icon or press the second right hard button (see right picture below.) In the full screen mode the whole display is used to show the slides. No toolbar, slider or system menu is shown as in the normal screen mode. See next section for the description of the full screen mode.

In the normal screen mode, just click on the play icon or push the hard button as shown in the left picture below. If you do not want to start at the beginning of the lecture you can use different modes (thumbnail mode, table of contents) and navigation techniques (slider, stylus, buttons) to begin at any point of time in the lecture (see section 1.3). You can pause the lecture with the pause button (right picture below)



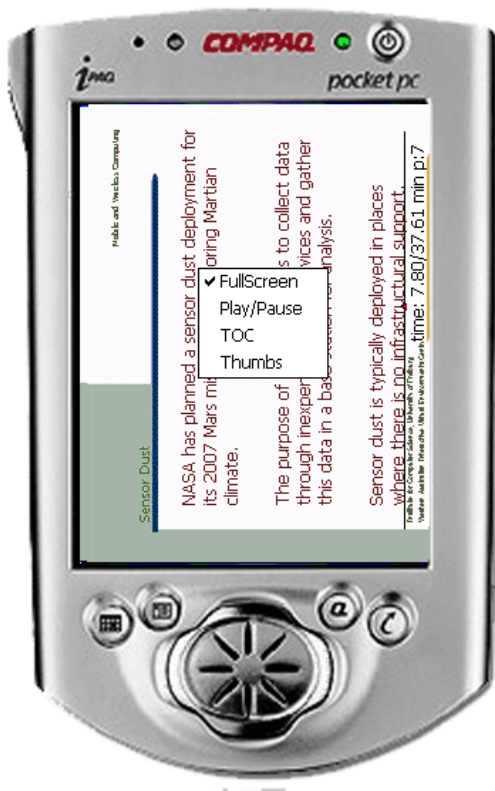
Click the icon or select from menu (Main-Play) or press the button to play the lecture.



Click the icon to pause the lecture.

Click the icon or press the button to change to Full screen mode.

Full Screen Mode



In the full screen mode you can start or stop the replay using the menu. Just tap the stylus on the screen and hold it for few seconds. A context menu will be popup; choose the menu item “Play/Pause”.

You can also go back to the normal screen mode by clicking on the menu item “FullScreen”. Using the menu “Thumbs” you will jump to the Thumbnail overview.

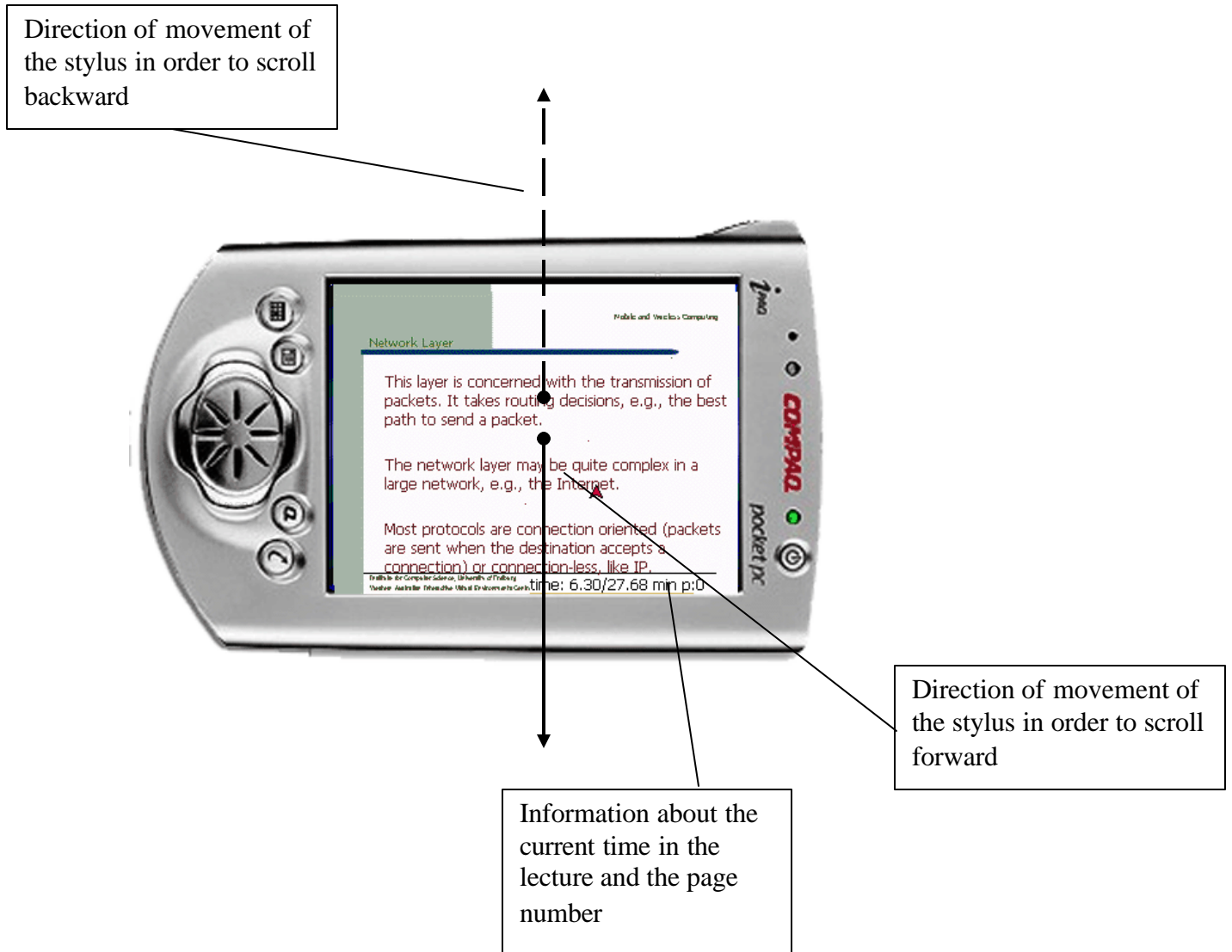
You can also scroll through the lecture by using the stylus (see next section)

3.3. Search for information

3.3.1. Use the Stylus for Full Screen and Normal Screen Mode

In the normal screen and in the full screen mode you can use the stylus to scroll through the lecture.

Tap the stylus (pen) on the screen to scroll. Each move will scroll the lecture, by default, 10 second forward or backward. If you want to scroll faster through the lecture you can set this value higher by using options dialog (see section 2). As shown in the picture below the thick solid arrows indicates the direction the stylus has to be moved on the screen in order to go forward in the lecture. The dashed arrows show the direction how the stylus has to be moved in order to go backward. Together with the hard buttons which can be used for jumping over the slides (see section 1.3.5) you have a convenient way to navigate through the lecture.

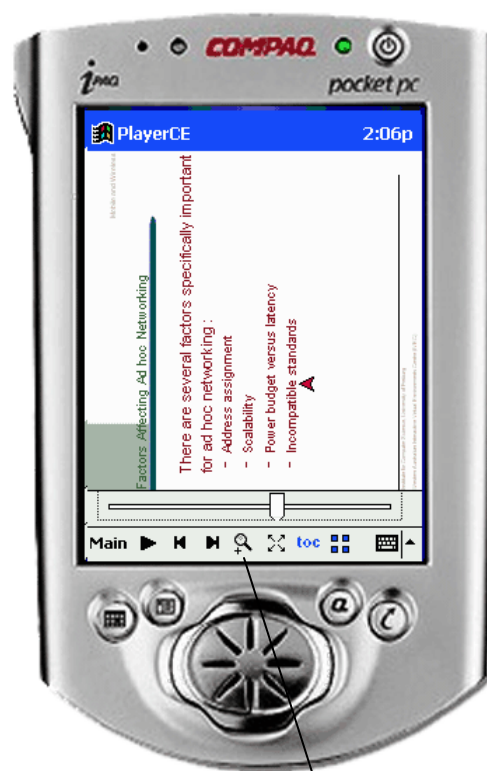


3.3.2. Use the Slider in the Normal Screen Mode

For long lecture, even a small movement of the Slider might equal to several minutes or seconds. Therefore, the program allows scrolling within one page which then improves the scrolling granularity. To scroll within one page, click the magnify glass icon with plus sign to change to minus sign. The magnify glass icon with plus sign is for scrolling within the whole lecture.



ZoomIn mode
(Scroll within a page).
Move Slider to scroll.



ZoomOut mode
(Scroll within the lecture).
Move Slider to scroll.

3.3.3. Table of contents (TOC)

The table of contents has information about the number, the title, the time when the slide is shown in the presentation. Tapping with the stylus on a thumbnail will open the normal screen mode with this slide. Then you can start replay of the lecture at the beginning of the slide.



Normal screen mode: Click this icon to open TOC.



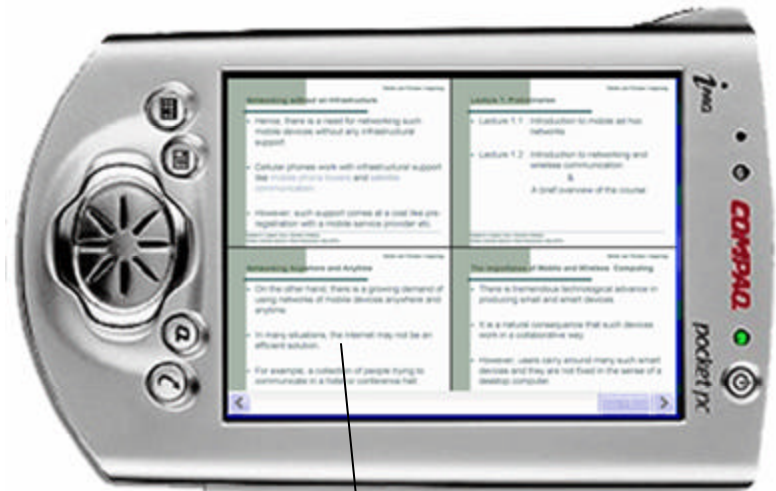
A dialog is opened. Click to go to a page.

3.3.4. Thumbnails

The thumbnail screen you will see the thumbnail of the slides together with the slide number. On the thumbnail are also the drawings of the presenter visible. Tapping with the stylus on a thumbnail will open the normal screen mode with this slide. Then you can start replay of the lecture at the beginning of the chosen slide.



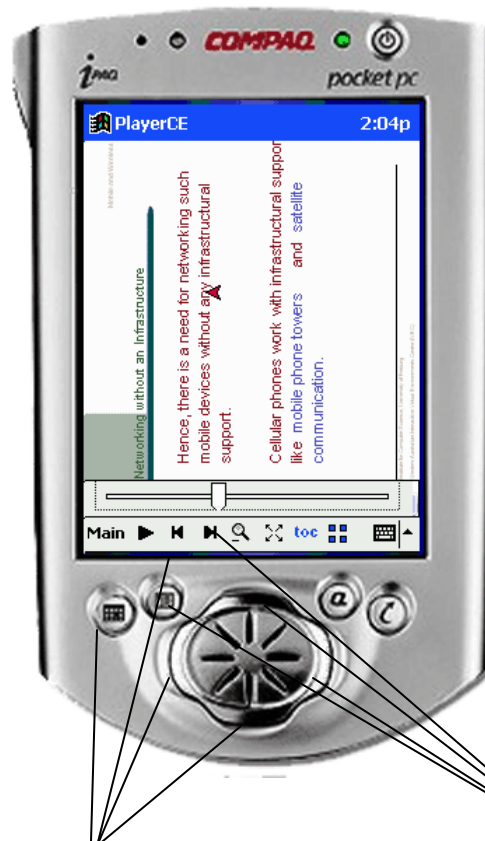
Click this icon to open thumbnails.



Click on a thumbnail to go to a page.

3.3.5. Use forward/backward buttons

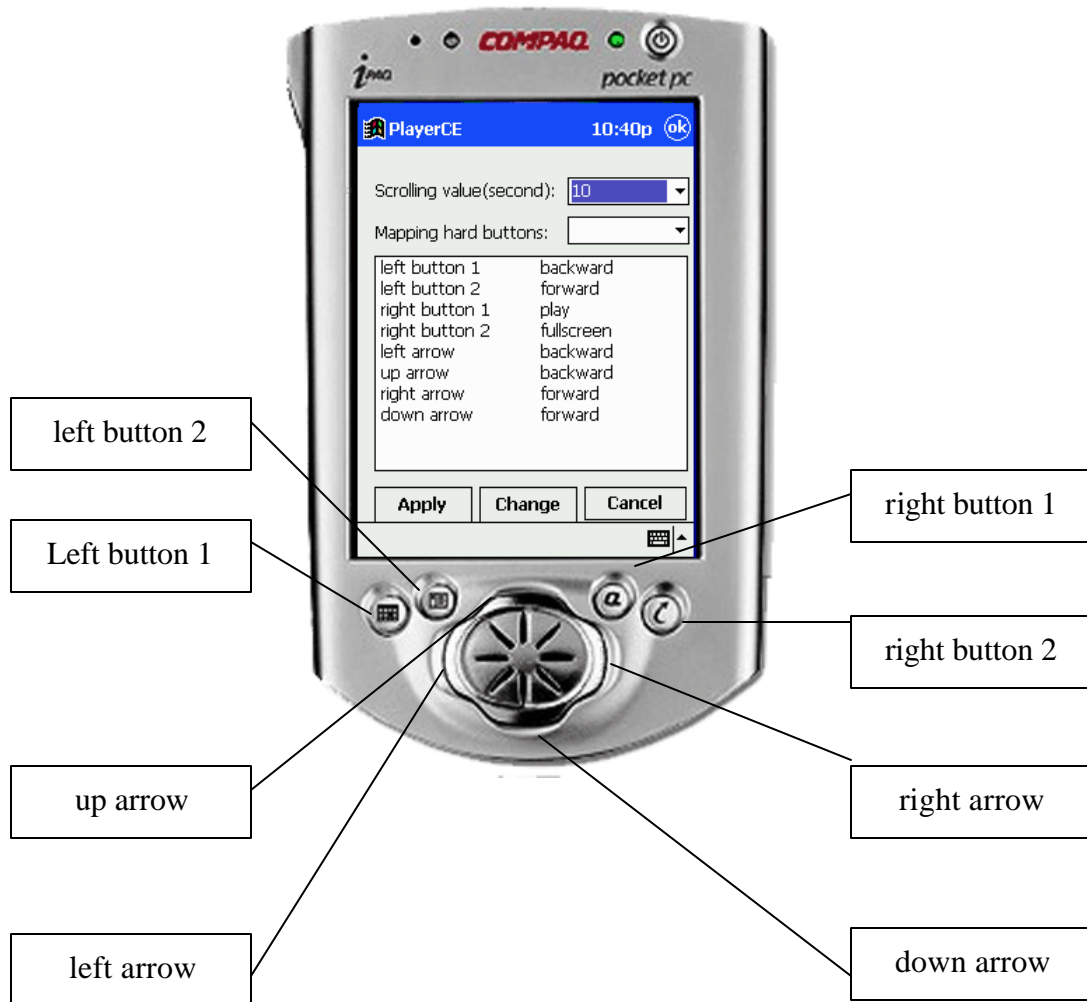
To go to next or previous slide, use the forward/backward functions. It can be done through the icons on the toolbar or the hard buttons (see picture below). By default, the first left buttons, left and down arrow of the joypad are used for backward; the second left button, right and up arrow of the joypad are used for forward. However, the mapping can be changed (see next section)



Click the icon or press the buttons to go to previous page.

Click the icons or press the buttons to go to next page.

4. Options dialog



Scrolling Value:

Select scrolling value from the drop down list by using (up, down, left right) arrow. Value 10 is set by default. This means that each move with the stylus on the screen will scroll the lecture 10 second forward or backward. If you want navigate faster through the lecture you can chose a higher value, for example 40.

Mapping hard Buttons:

1. Select functions (play, forward, backward, full screen) from the drop down list by using (up, down, left right) arrow.
2. Select a button from the list, click "Change" to map the button to the current function in the drop down list(mapping hard buttons).

Click "Apply" to confirm all the changes and close the dialog.

5. Close the program

Select menu: Main-Exit to close the program.



6. Bugs list

For comments and bugs list, please send email to:

Phuong.Nguyen@unibas.ch

Thank you very much.